



深圳德彩光电有限公司  
Shenzhen Dicolor Optoelectronics Co.,Ltd

# LED模组规格书

## LED MODULE SPECIFICATION

编号 ( NO. ):	DI-P7F1
类型 ( Type ):	Indoor LED Module
间距 ( Pitch ):	7.62 mm
驱动 ( Driving ):	1/8 Duty
版本 ( Version ):	1.0



地址: 深圳市宝安区福永镇永和路德彩工业园  
Address: Dicolor Industry Park, Yonghe Road, Fuyong town, Bao'an District, Shenzhen, China  
电话 (Tel): 0086-755-29604770/29604771/29604749 传真 (Fax): 0086-755-29604042  
网址 (Web): [Http://www.dicolor.cn](http://www.dicolor.cn) 邮编 (Post code): 518103



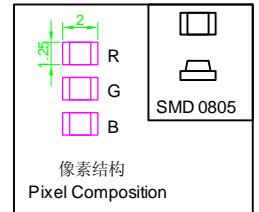
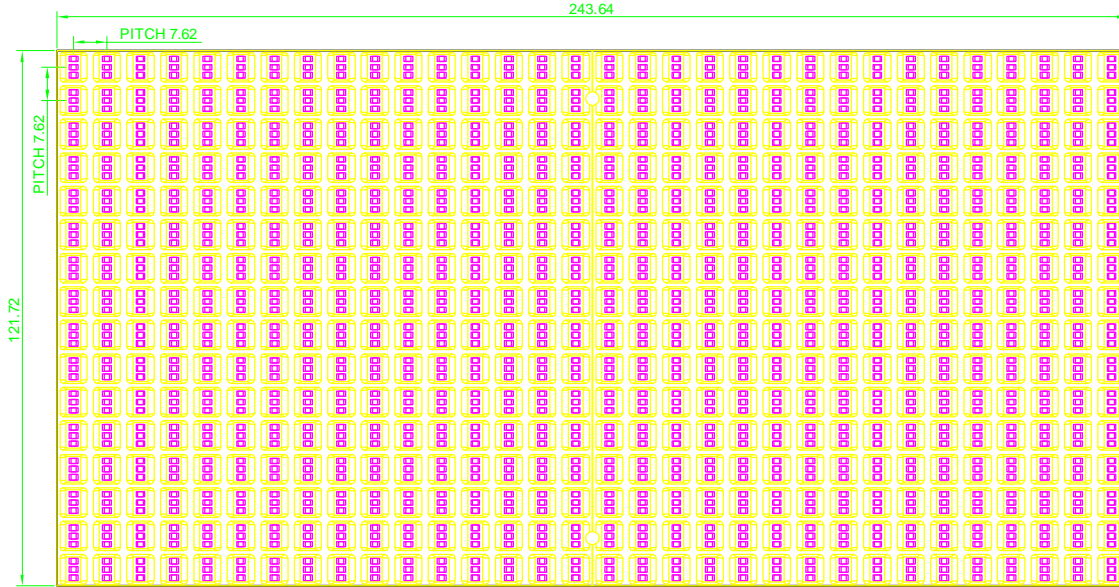
# 深圳德彩光电有限公司

## Shenzhen Dicolor Optoelectronics Co.,Ltd

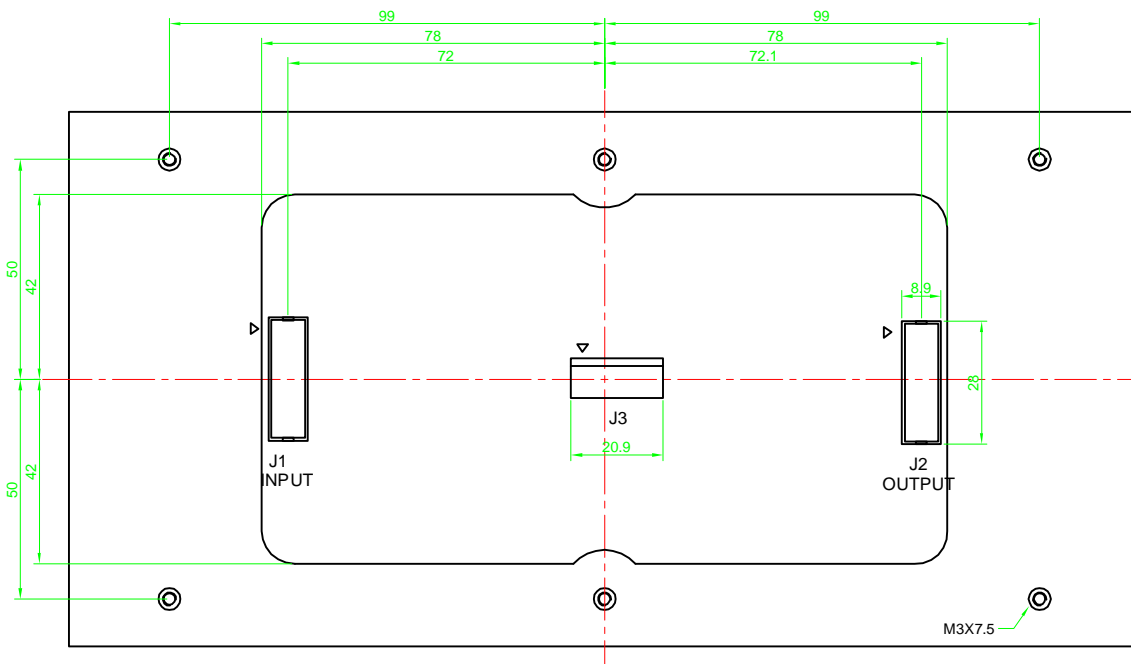
DI-P7F1

户内模组 ( INDOOR MODULE )

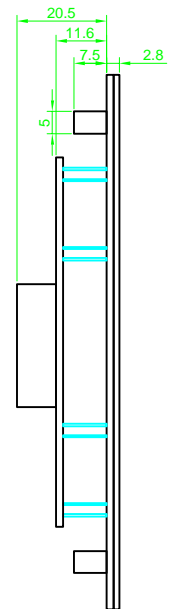
单位 / Unit : mm



FRONT VIEW



BACK VIEW



SIDE VIEW

Pin Assignment (Data J1/J2 - F.C.16)

Pin NO.	Function	Pin NO.	Function
1	R0	2	G0
3	B0	4	GND
5	R1	6	G1
7	B1	8	GND
9	A	10	B
11	C	12	GND
13	CLK	14	LAT
15	OE	16	GND

Pin Assignment (Power J3 - CH5)

Pin NO.	Function
1	VDD
2	VDD
3	VCC
4	GND
5	GND



深圳德彩光电有限公司  
Shenzhen Dicolor Optoelectronics Co.,Ltd

DI-P7F1

户内模组 ( INDOOR MODULE )

主要技术指标

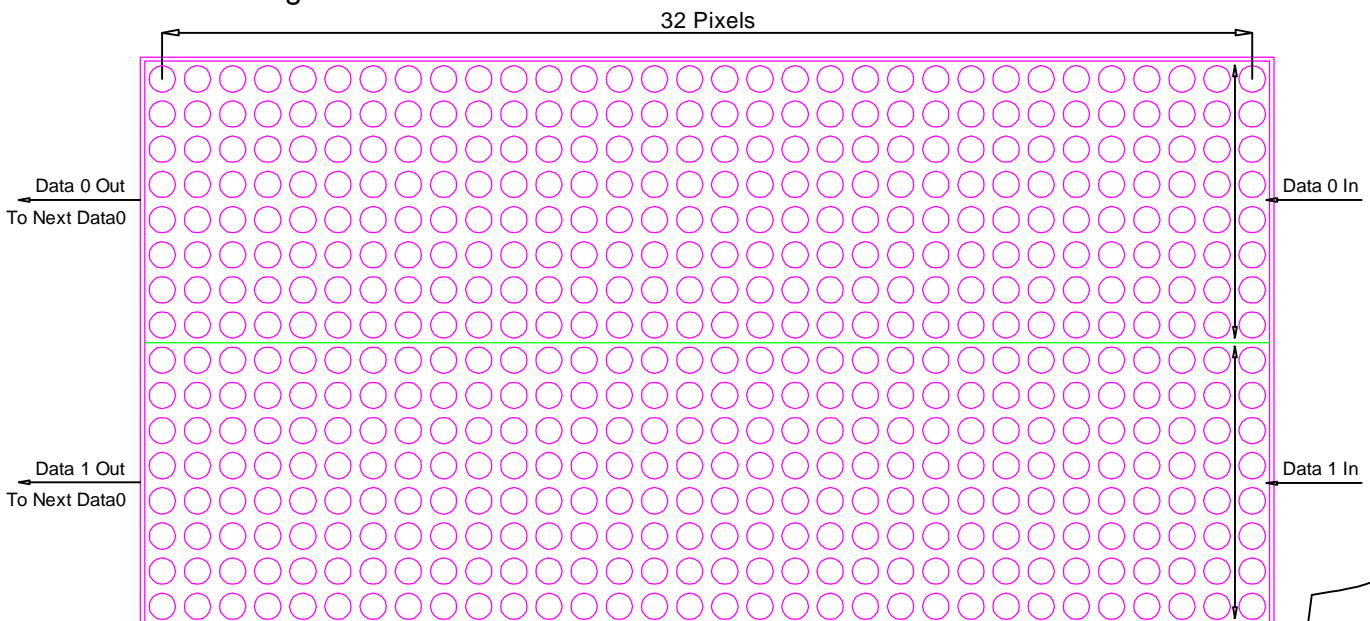
MAIN SPECIFICATIONS

(温度条件 Ta = 25°C)

项目 (ITEM)	参数 DESCRIPTION
像素间距 (Pixel Pitch)	Pitch 7.62 mm
显示分辨率 (Display resolution)	32 x 16 Dots
像素基色 (Pixel configuration)	1R,1G,1B
物理密度 (Physical density)	17222 ( pixels / m <sup>2</sup> )
驱动方式 (Driving Method)	1/8 Duty
外形尺寸 (Panel size)	243.64x121.72mm
灰度等级 (Gray scale)	16384
显示亮度 (Brightness)	1200 ± 10% Nit
模组视角 (Viewing angle)	H:160° / V:120°
最佳视距 (Option distance)	> 6M
LED封装 (LED Encapsulation)	SMD0805
LED波长 (LED Wavelength)	R:620~630nm G:520~530nm B:465~475nm
工作电压 (Working Voltage)	DC 5 V
使用功耗 (Working Consumption)	24W
使用寿命 (Life Time)	100,000 Hours
环境温度 (Environment Temperature)	-20°C ~ 60°C
外壳材质 (Material of Module Outside Frame)	PC

数据传输原理图

Drive Data Register Direction



FRONT VIEW (LAMP VIEW)