



深圳德彩光电有限公司  
Shenzhen Dicolor Optoelectronics Co.,Ltd

# LED模组规格书

## LED MODULE SPECIFICATION

编号 ( NO. ):	DI-P7F2
类型 ( Type ):	Indoor LED Module
间距 ( Pitch ):	7.62 mm
驱动 ( Driving ):	1/4 Duty
版本 ( Version ):	1.0



请避免重物挤压灯面!



小心静电损坏LED!



非专业人员请勿维修!

地址: 深圳市宝安区福永镇永和路德彩工业园

Address:Dicolor Industry Park, Yonghe Road, Fuyong town, Bao'an District, Shenzhen, China

电话(Tel):0086-755-29604770/29604771/29604042 传真(Fax):0086-755-29604042

网址(Web):Http//[www.dicolor.cn](http://www.dicolor.cn)

邮编(Post code):518103



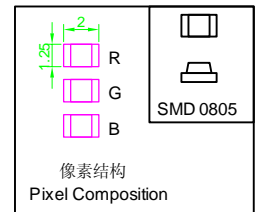
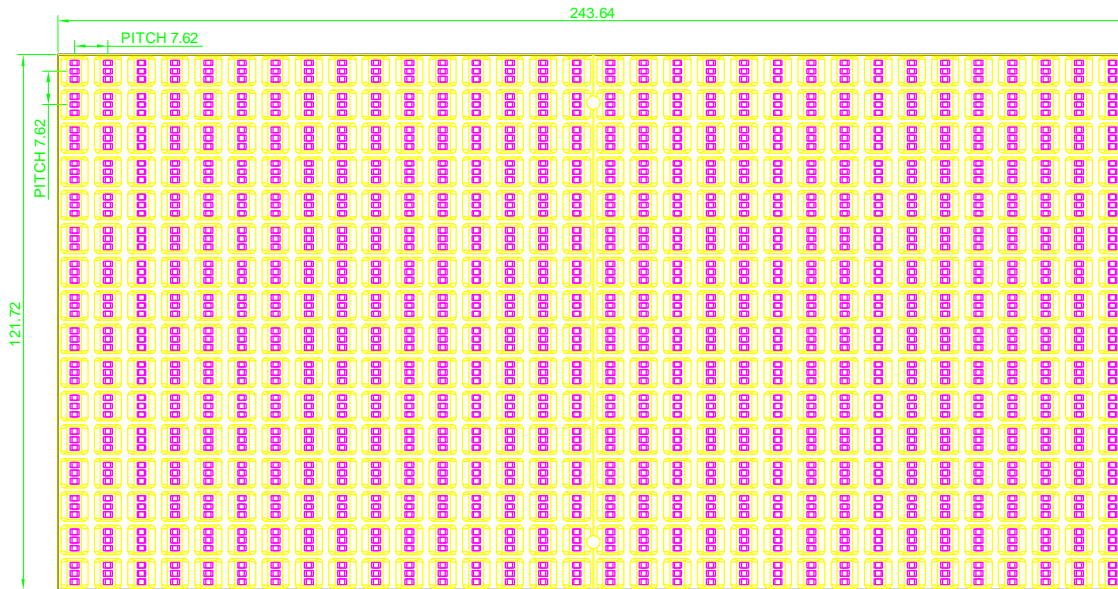
# 深圳德彩光电有限公司

## Shenzhen Dicolor Optoelectronics Co.,Ltd

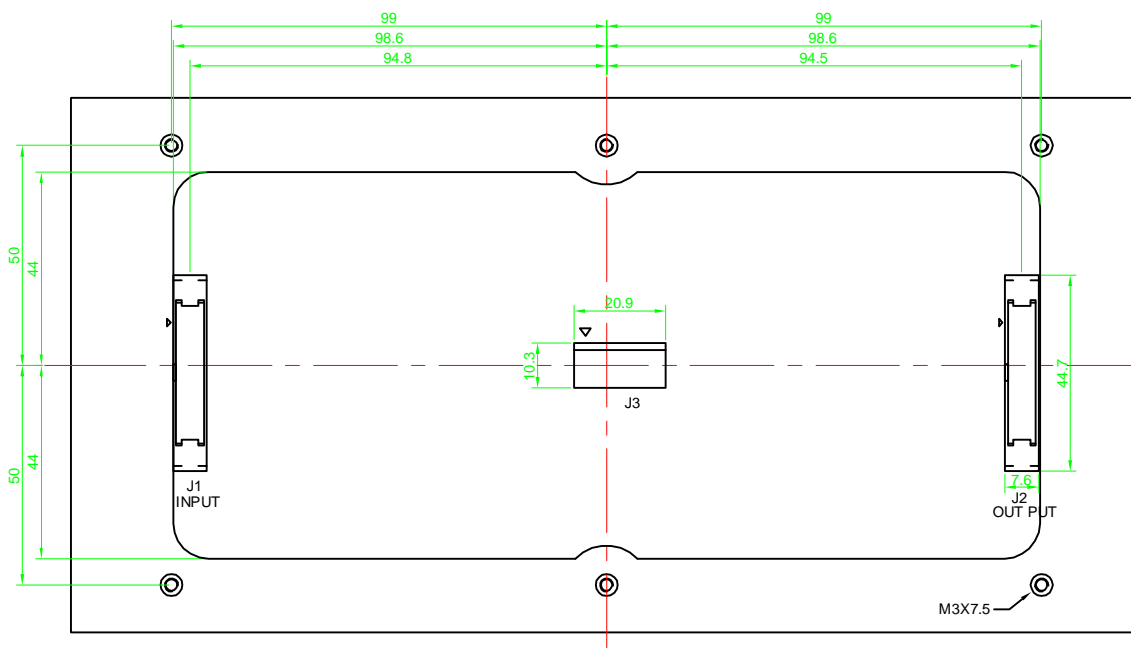
DI-P7F2

户内模组 ( INDOOR MODULE )

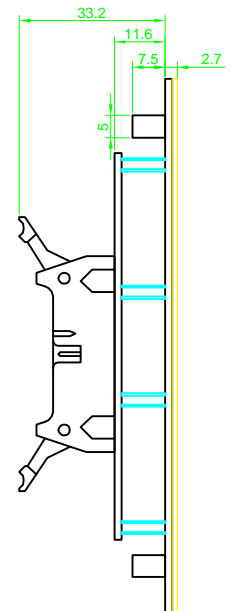
单位 / Unit : mm



FRONT VIEW



BACK VIEW



SIDE VIEW

Pin Assignment (Data J1/J2 - F.C.20)

Pin NO.	Function	Pin NO.	Function
1	R0	2	R1
3	R2	4	R3
5	G0	6	G1
7	G2	8	G3
9	B0	10	B1
11	B2	12	B3
13	A	14	B
15	CLR	16	GND
17	LAT	18	GND
19	OE	20	GND

Pin Assignment (Power J3 - CH5)

Pin NO.	Function
1	VDD
2	VDD
3	VCC
4	GND
5	GND



# 深圳德彩光电有限公司

## Shenzhen Dicolor Optoelectronics Co.,Ltd

DI-P7F2

户内模组 ( INDOOR MODULE )

主要技术指标

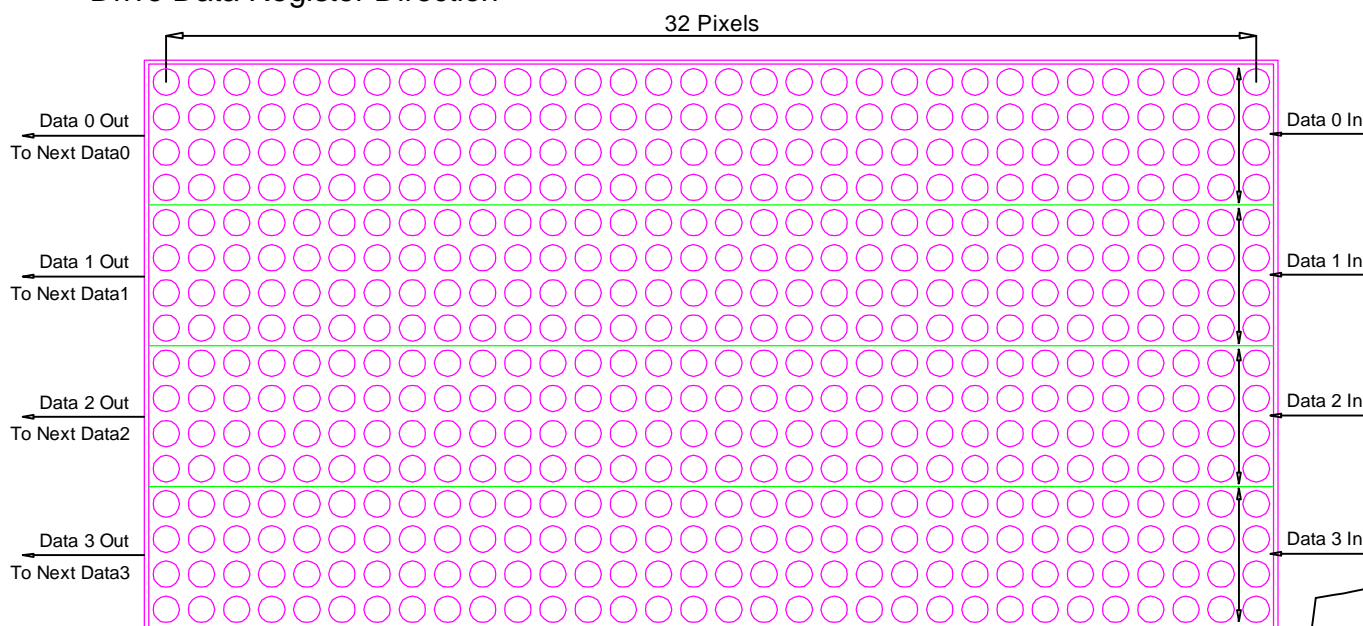
### MAIN SPECIFICATIONS

(温度条件 Ta = 25°C)

项目 (ITEM)	参数 DESCRIPTION
像素间距 (Pixel Pitch)	Pitch 7.62 mm
显示分辨率 (Display resolution)	32 x 16 Dots
像素基色 (Pixel configuration)	1R,1G,1B
物理密度 (Physical density)	17222 (pixels / m <sup>2</sup> )
驱动方式 (Driving Method)	1/4 Duty
外形尺寸 (Panel size)	243.64x121.72mm
灰度等级 (Gray scale)	16384
显示亮度 (Brightness)	1300 ± 10% Nit
模组视角 (Viewing angle)	H:160° / V:120°
最佳视距 (Option distance)	> 6M
LED封装 (LED Encapsulation)	SMD0805
LED波长 (LED Wavelength)	R:620~630nm G:520~530nm B:465~475nm
工作电压 (Working Voltage)	DC 5 V
使用功耗 (Working Consumption)	48W
使用寿命 (Life Time)	100,000 Hours
环境温度 (Environment Temperature)	-20°C ~ 60°C
外壳材质 (Material of Module Outside Frame)	PC

数据传输原理图

### Drive Data Register Direction



FRONT VIEW (LAMP VIEW)